



SINGLE FAMILY HOME

# 6695 Sydney Drive NE

Rio Rancho, NM 87144


MOVE-IN READY



HOME PRICED AT

## \$469,515

Plan: Loreto

 2,102 Sq. Ft.

 3 Bedrooms

 2.5 Bathrooms

The laidback energy that draws visitors to the Pueblo Magico (Magic Town) year after year makes Loreto, Mexico the place to go for a relaxing and rejuvenating trip. Much like this Baja California Sur beach town, the Loreto floor plan is a staycation awaiting your arrival. The front balcony off of the owner's suite gives that experience of waking up each day to a postcard-like view. This home maximizes every inch of usable space and is one of the most popular plans from this lineup.

Homes may be built in reverse of plans shown, depending on site conditions. Minor architectural changes may be made occasionally at the option of the builder. Printed material is not date stamped. Prices are subject to change. Please reference Abrazo Homes' website for most updated and accurate pricing and information. Please contact your Sales Consultant for details.



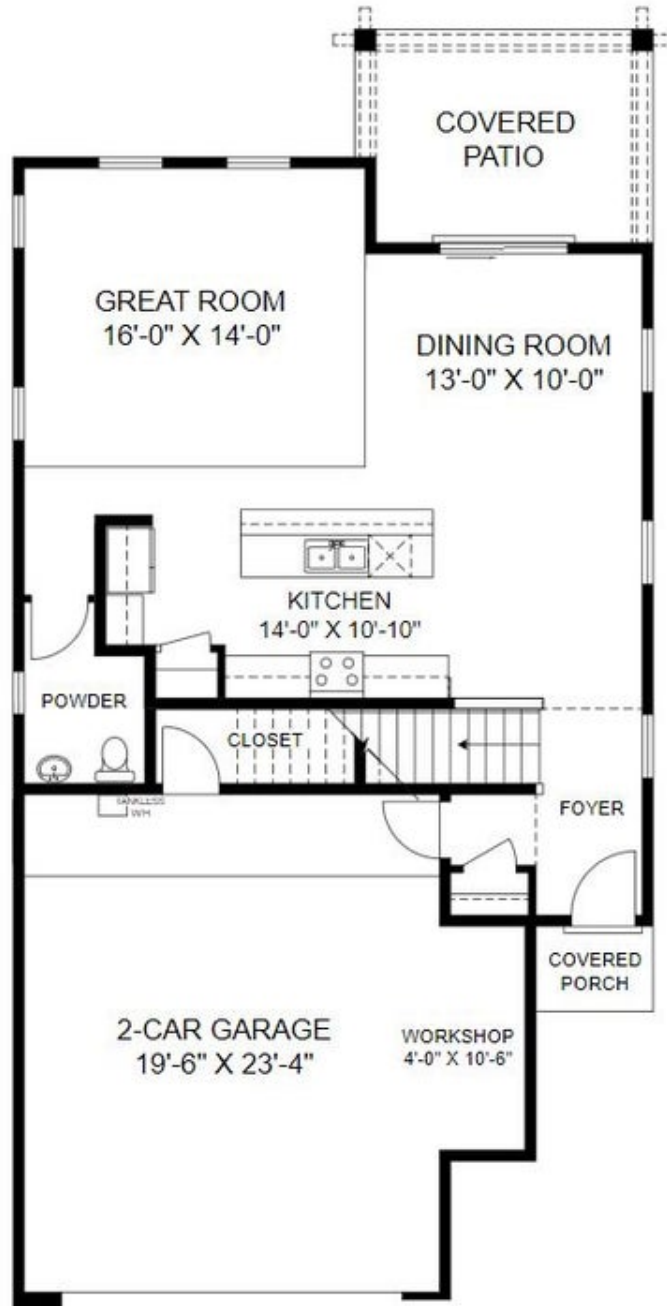


SINGLE FAMILY HOME

# 6695 Sydney Drive NE

Rio Rancho, NM 87144

## First Floor



Homes may be built in reverse of plans shown, depending on site conditions. Minor architectural changes may be made occasionally at the option of the builder. Printed material is not date stamped. Prices are subject to change. Please reference Abrazo Homes' website for most updated and accurate pricing and information. Please contact your Sales Consultant for details.



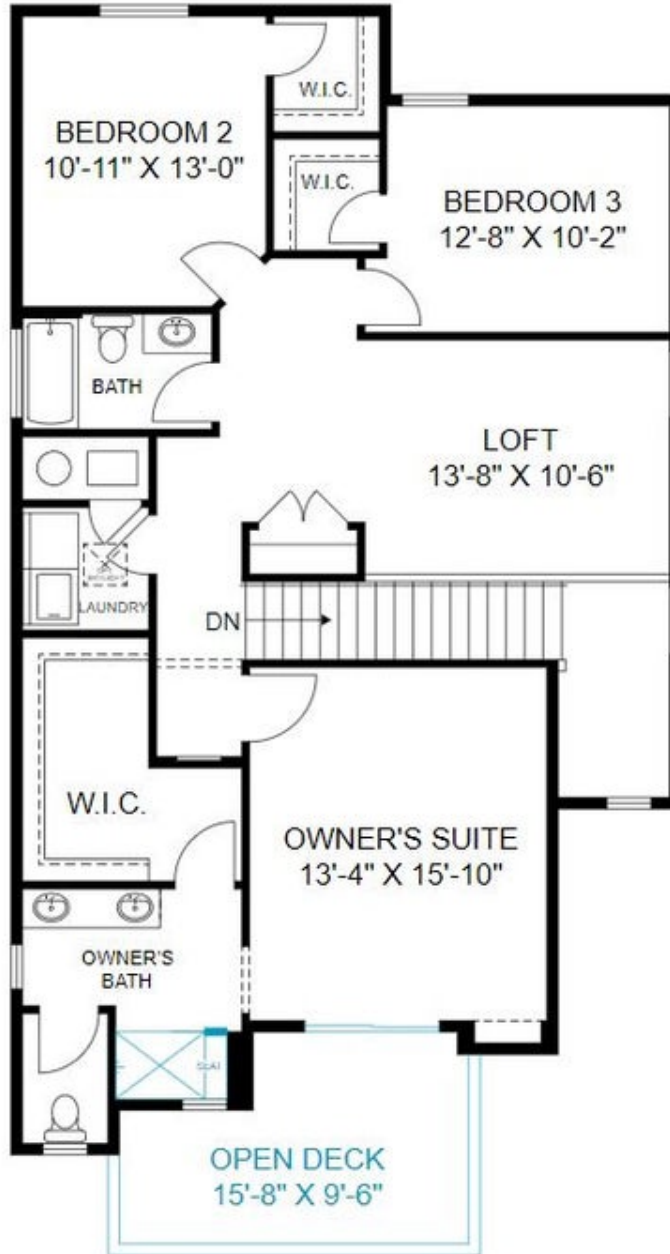


SINGLE FAMILY HOME

# 6695 Sydney Drive NE

Rio Rancho, NM 87144

## Second Floor



Homes may be built in reverse of plans shown, depending on site conditions. Minor architectural changes may be made occasionally at the option of the builder. Printed material is not date stamped. Prices are subject to change. Please reference Abrazo Homes' website for most updated and accurate pricing and information. Please contact your Sales Consultant for details.

