



SINGLE FAMILY HOME

The Victoria

Lomas Encantadas

NEW HOME SPECIALIST


Call Us @ 505-510-4626



PRICED FROM


\$517,990

2 Elevations Available

 2,594+ Sq. Ft.

 3 - 5 Bedrooms

 2.5 - 4 Bathrooms

 2 Car Garage

Meet the Victoria, the flagship of the Abrazo fleet. Luxurious and adaptable, it's designed to meet any family's needs. The owner's suite features dual walk-in closets, secondary bedrooms offer a Jack and Jill layout, and there's even an optional casita. Enjoy optimal natural lighting with large sliding glass doors that seamlessly connect indoor and outdoor spaces. In honor of Victoria Woodhull, this home pays homage to progress and inclusivity, celebrating a legacy of brightness.



Victoria Mission Tile Roof

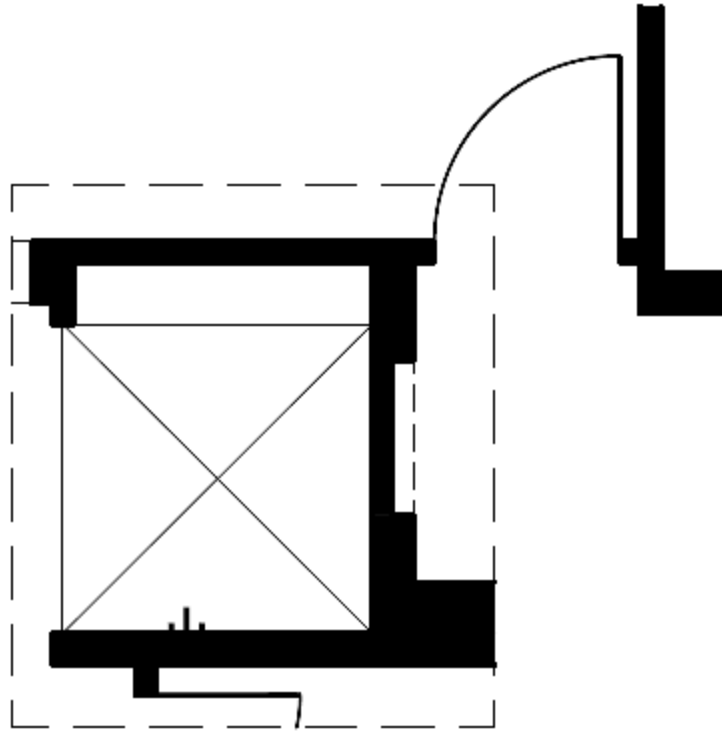


Craftsman Elevation

Homes may be built in reverse of plans shown, depending on site conditions. Minor architectural changes may be made occasionally at the option of the builder. Printed material is not date stamped. Prices are subject to change. Please reference Abrazo Homes' website for most updated and accurate pricing and information. Please contact your Sales Consultant for details.

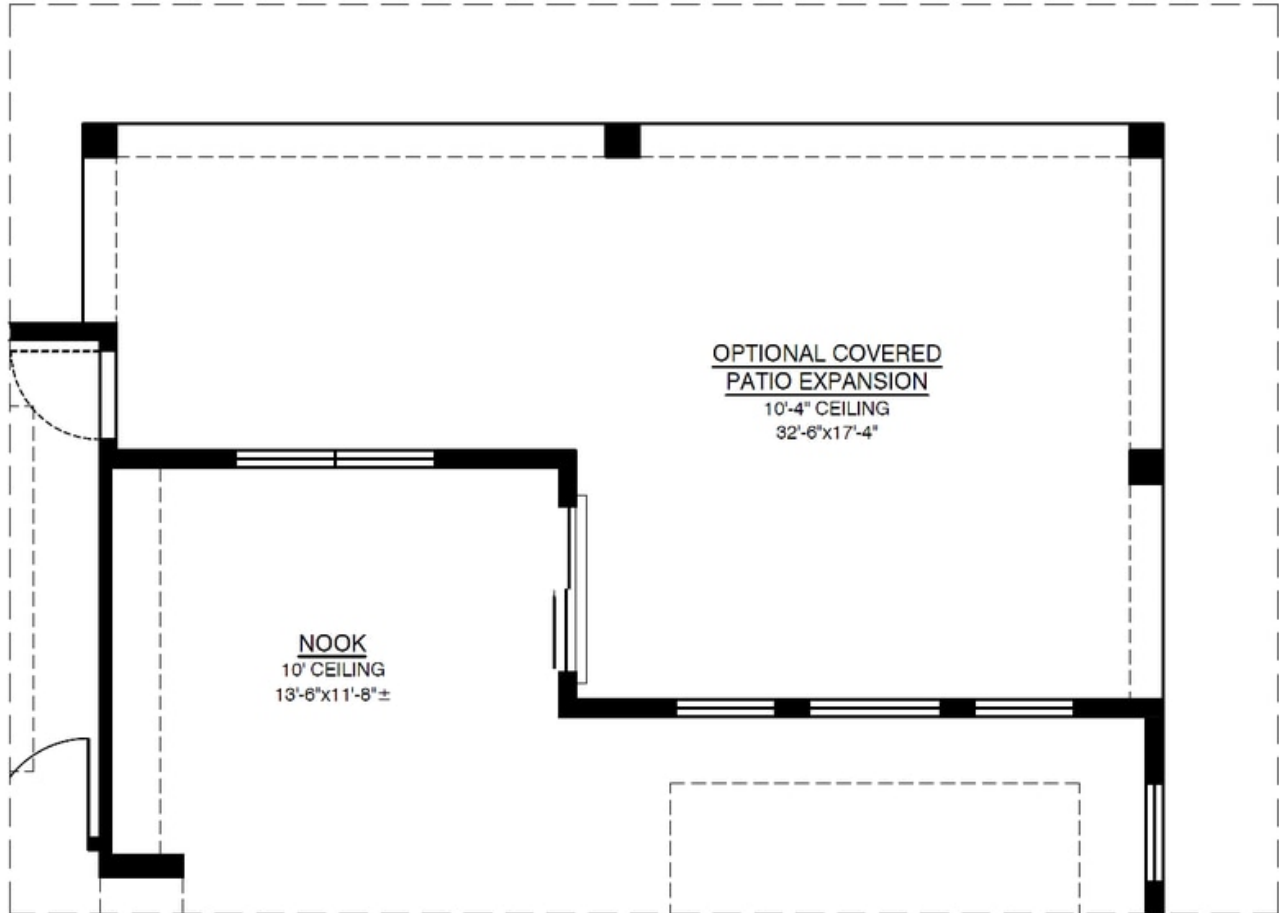


Optional Shower in Owner's Suite



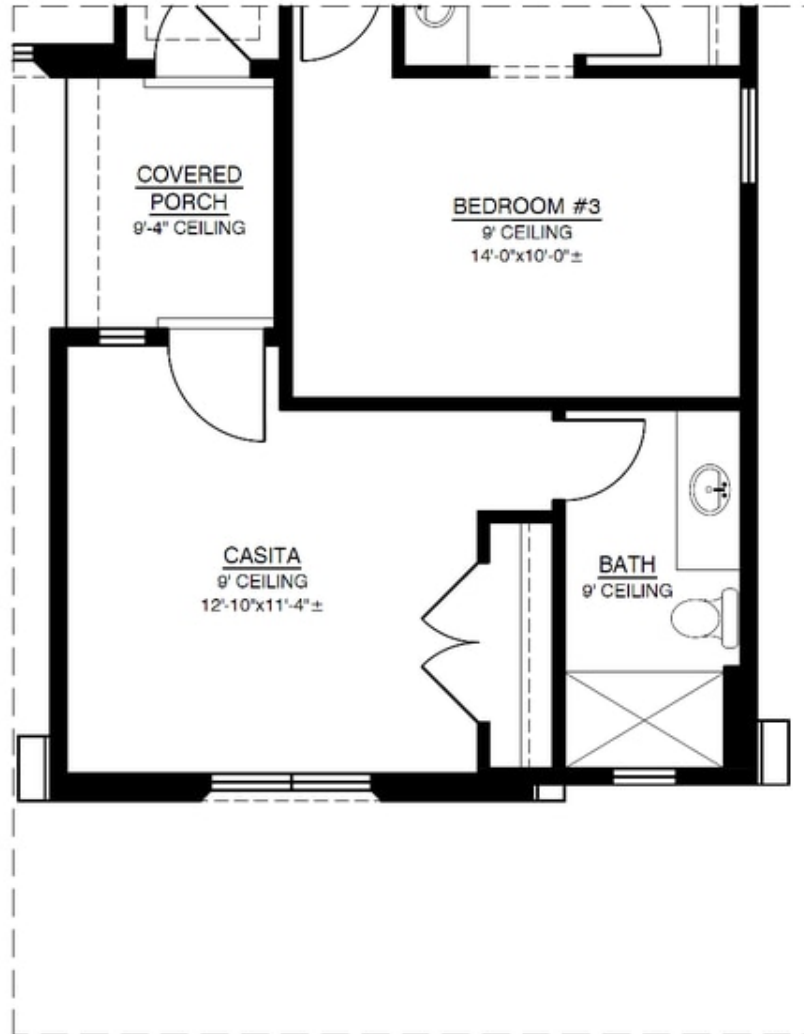
OPTIONAL 5'x5' SHOWER IN OWNER'S SUITE

Optional Covered Patio Expansion



OPTIONAL COVERED PATIO EXPANSION
ADDITIONAL 195.00 SQ. FT. (UNHEATED)

Optional Casita

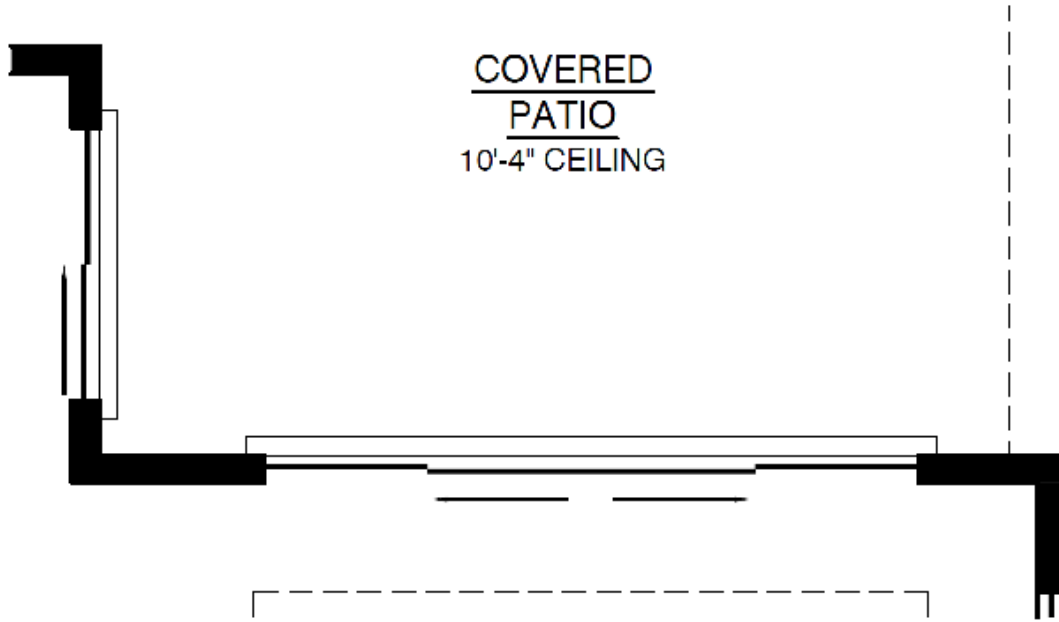


OPTIONAL CASITA

ADDITIONAL 211.66 SQ. FT. (HEATED)

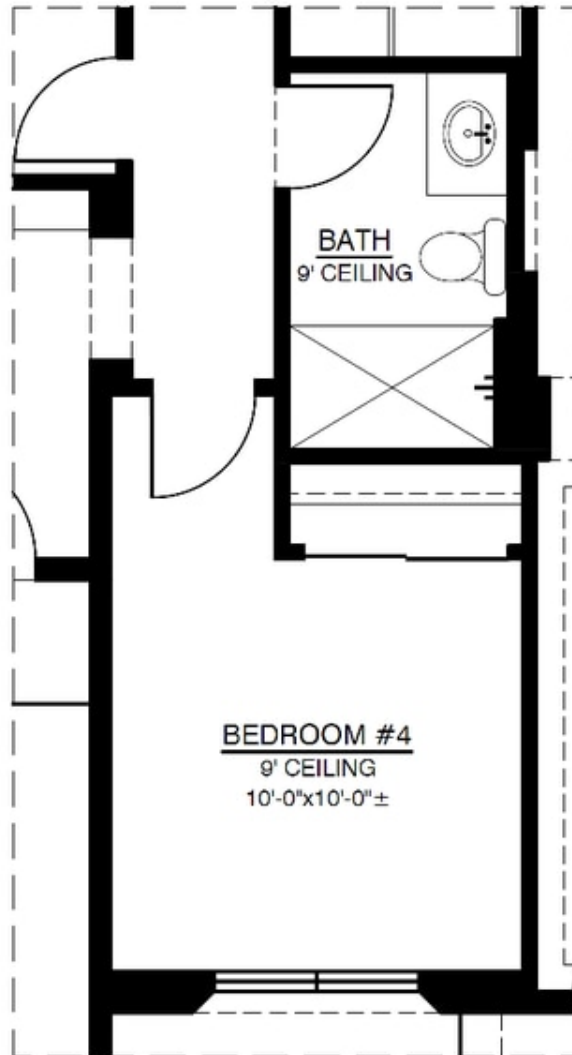
ADDITIONAL 18.41 SQ. FT. (UNHEATED)

Optional Sliding Glass Door



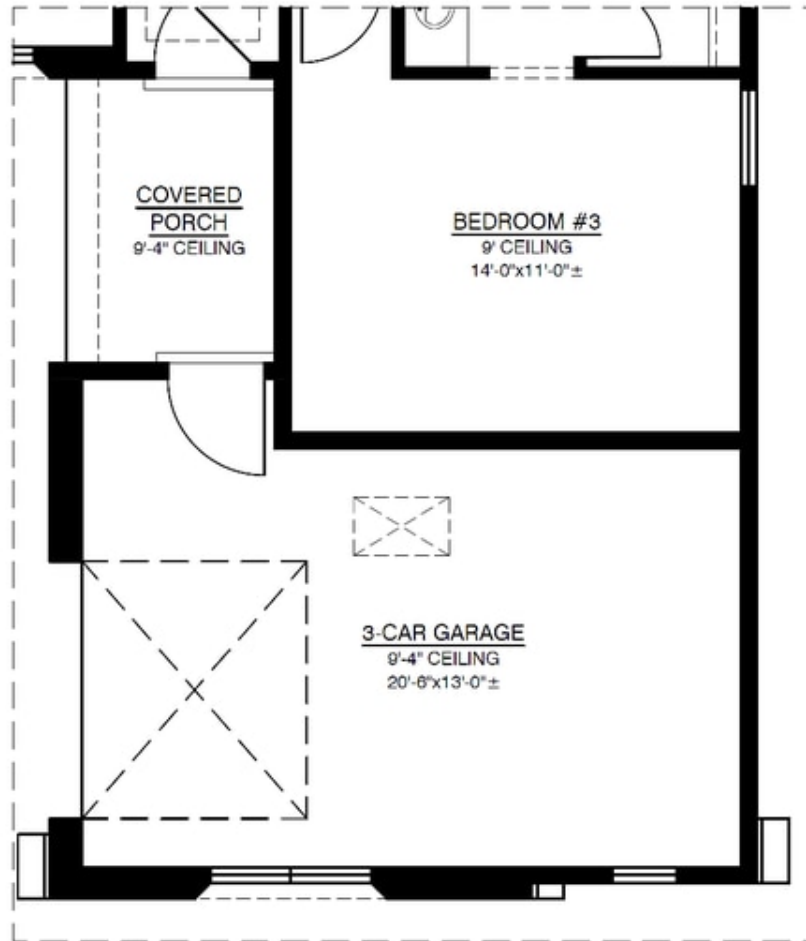
OPT. 12'x8'-0" SLIDING GLASS DOOR

Optional 4th Bedroom In Lieu of Dining Room



OPTIONAL BEDROOM #4 & BATH IN LIEU OF DINING ROOM NO CHANGE IN SQUARE FOOTAGE

Optional 3rd Car Garage



OPTIONAL 3RD CAR GARAGE
SUBTRACT -52.5 SQ. FT. (HEATED)
ADDITIONAL 295.57 SQ. FT. (UNHEATED)