



NONE HOME

Coco II

Vista Manzano



PRICED FROM

\$450,980

12 Elevations Available

2,963+ Sq. Ft.

4 - 6 Bedrooms

2.5 - 4.5 Bathrooms

2 Car Garage

Inspired by the elegance of Coco Chanel, the Coco II is a sophisticated and versatile 2-story home spanning 2,963 square feet up to 3,244. This spacious home features 4 bedrooms and 2.5 bathrooms, with options to expand up to 6 bedrooms and 4.5 bathrooms, catering to families of all sizes and needs. A 3rd car garage is also available as an option, offering even more convenience.

Designed with flexibility in mind, the Coco II is perfect for multigenerational households or those seeking ample living space. The open-concept layout provides a seamless flow between living areas, while private retreats ensure comfort for every member of the household. This home combines luxury and practicality, making it a timeless choice for modern living.



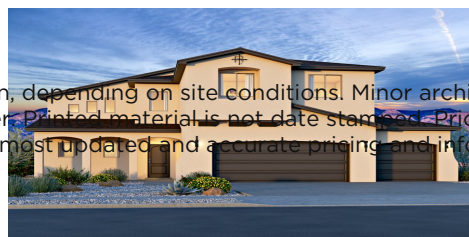
Coco II_Mission_Shingle_12.10.24



Coco II_Mission_Suite_Shingle_12.10.24



Coco II_Mission_Casita_Shingle_12.10.24



Homes may be built in reverse of plans shown, depending on site conditions. Minor architectural changes may be made occasionally at the option of the builder. Printed material is not date stamped. Prices are subject to change. Please reference Abrazo Homes' website for most updated and accurate pricing and information. Please contact your Sales Consultant for details.



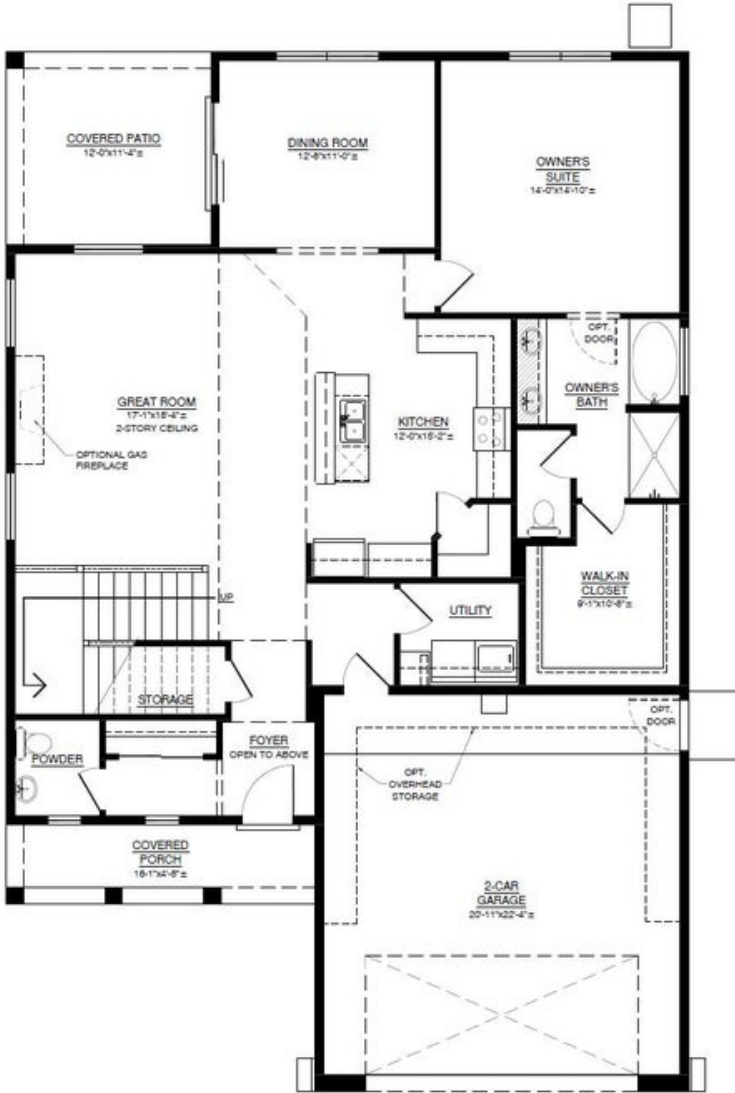


NONE HOME

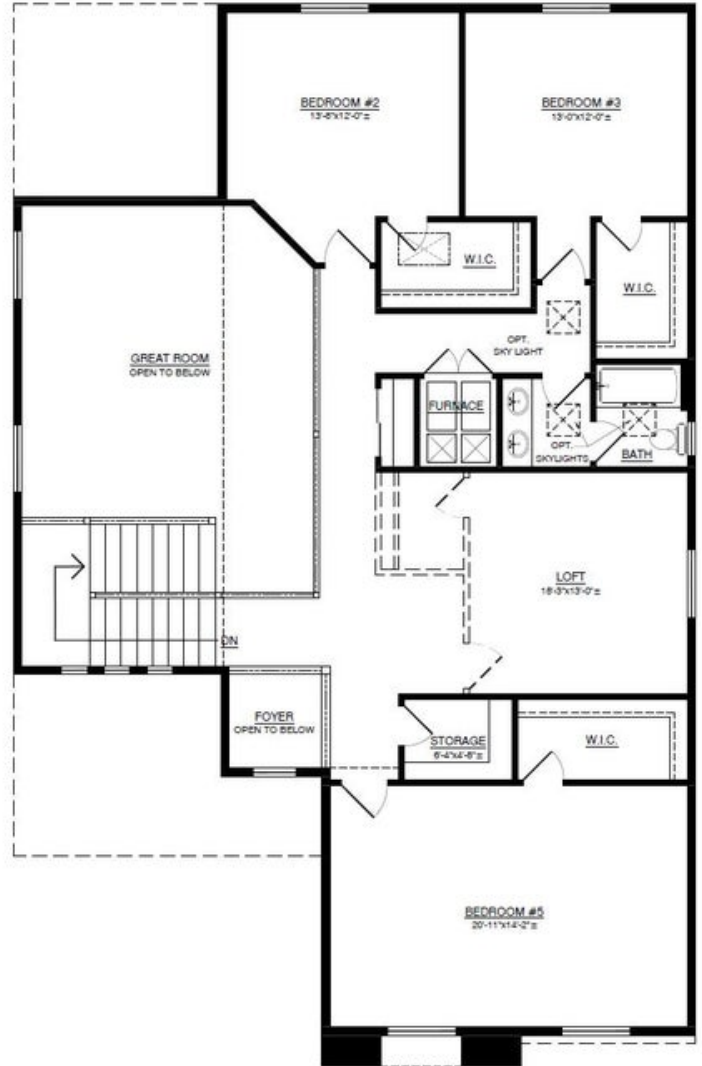
Coco II

Vista Manzano

Coco II Base Floor Plan



FIRST FLOOR



SECOND FLOOR

Homes may be built in reverse of plans shown, depending on site conditions. Minor architectural changes may be made occasionally at the option of the builder. Printed material is not date stamped. Prices are subject to change. Please reference Abrazo Homes' website for most updated and accurate pricing and information. Please contact your Sales Consultant for details.



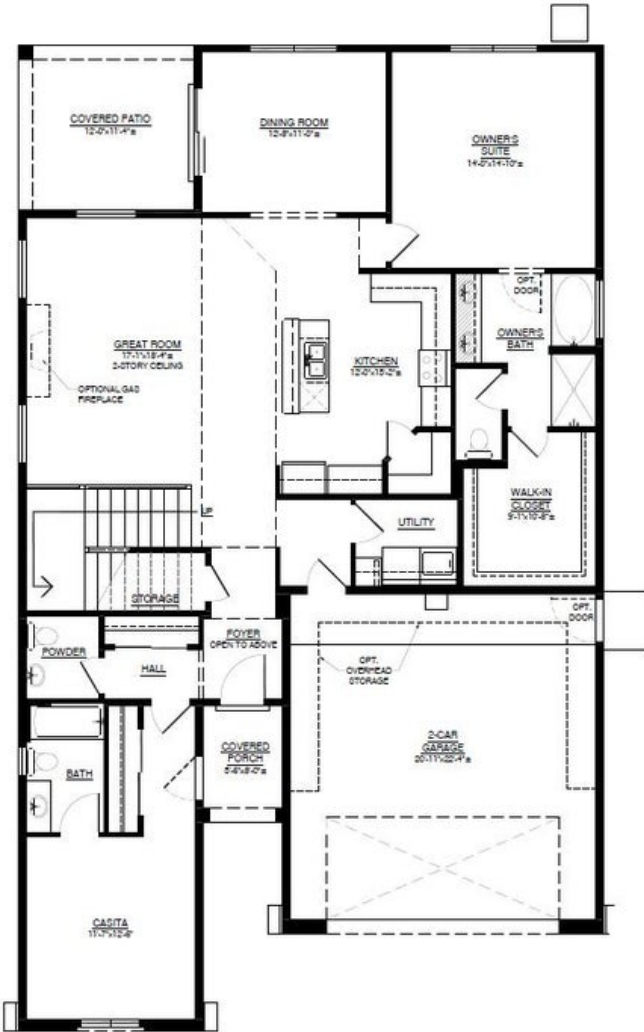


NONE HOME

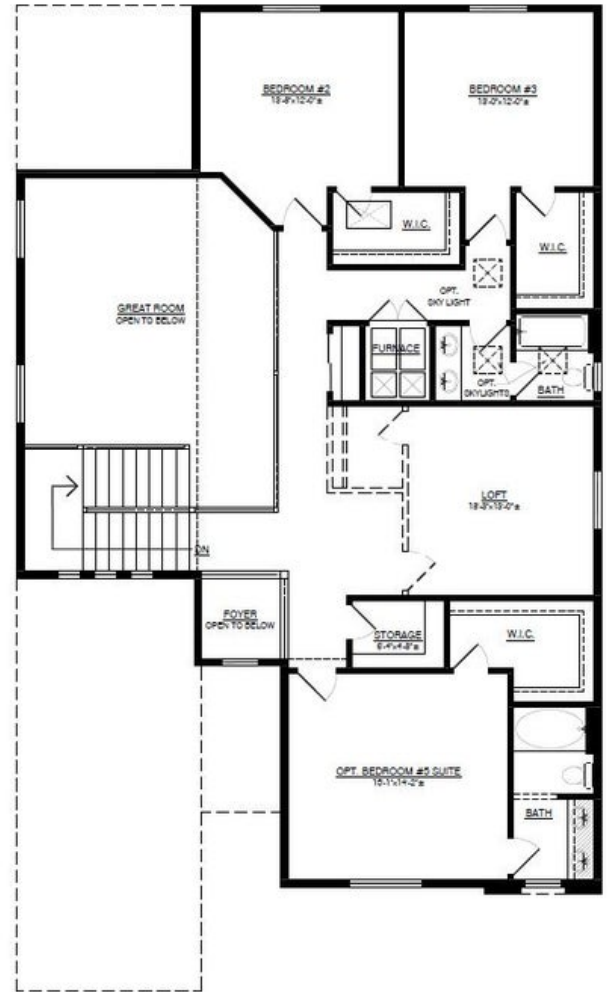
Coco II

Vista Manzano

Coco II Options: Casita; 5th Bedroom Suite



FIRST FLOOR W/OPT. CASITA



SECOND FLOOR W/OPT. BEDROOM #5 SUITE

Homes may be built in reverse of plans shown, depending on site conditions. Minor architectural changes may be made occasionally at the option of the builder. Printed material is not date stamped. Prices are subject to change. Please reference Abrazo Homes' website for most updated and accurate pricing and information. Please contact your Sales Consultant for details.

