



NONE HOME

Taylor II

Mil Colores at Fiesta



PRICED FROM

\$432,990

7 Elevations Available

-  2,603+ Sq. Ft.
-  3 - 5 Bedrooms
-  2.5 - 3.5 Bathrooms
-  2 Car Garage

Named in honor of Elizabeth Taylor, the Taylor II is a beautifully designed 2-story home, offering between 2,603 and 2,884 square feet of thoughtfully crafted living space. This home features 3 bedrooms, 2.5 bathrooms, a flexible loft, and a dedicated workspace—perfect for today’s lifestyle. With options to expand up to 5 bedrooms and 3.5 bathrooms, as well as the option to add a 3rd car garage, the Taylor II adapts to meet a variety of needs.

An optional attached casita suite makes this home especially ideal for multigenerational households, providing a private space for extended family members. The open-concept layout offers ample room for entertaining, while the well-planned design ensures privacy and comfort for all. The Taylor II combines modern functionality with classic appeal, creating a home that’s both stylish and versatile.



FRONT BASE ELEVATION

Taylor II Mission



FRONT OPT. CRAFTSMAN ELEVATION

Taylor II Craftsman

Homes may be built in reverse of plans shown, depending on site conditions. Minor architectural changes may be made occasionally at the option of the builder. Printed material is not date stamped. Prices are subject to change. Please reference Abrazo Homes’ website for most updated and accurate pricing and information. Please contact your Sales Consultant for details.



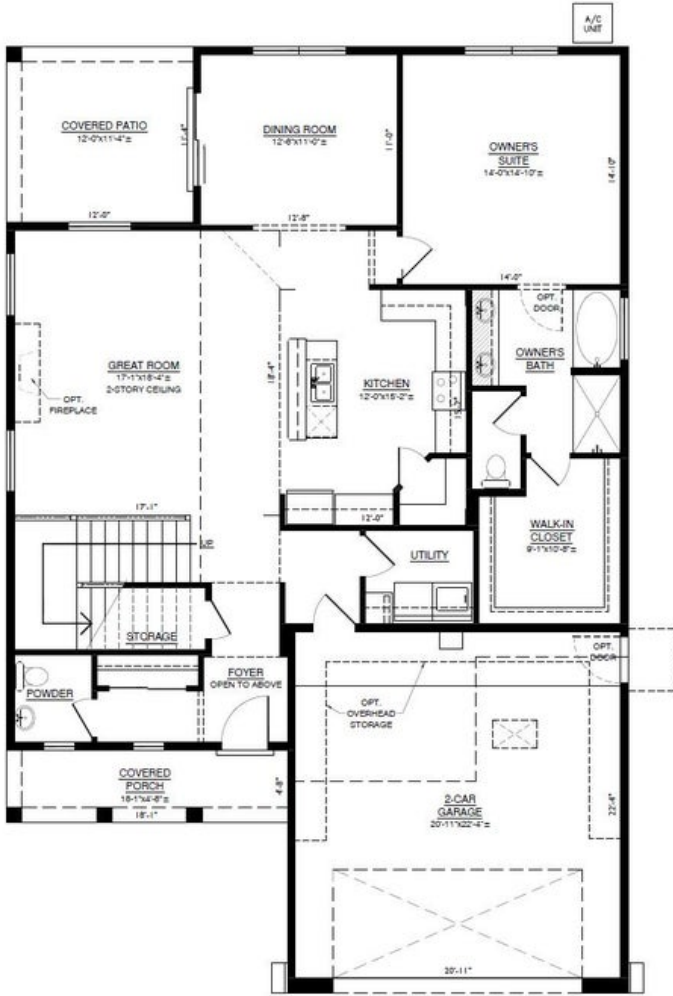


NONE HOME

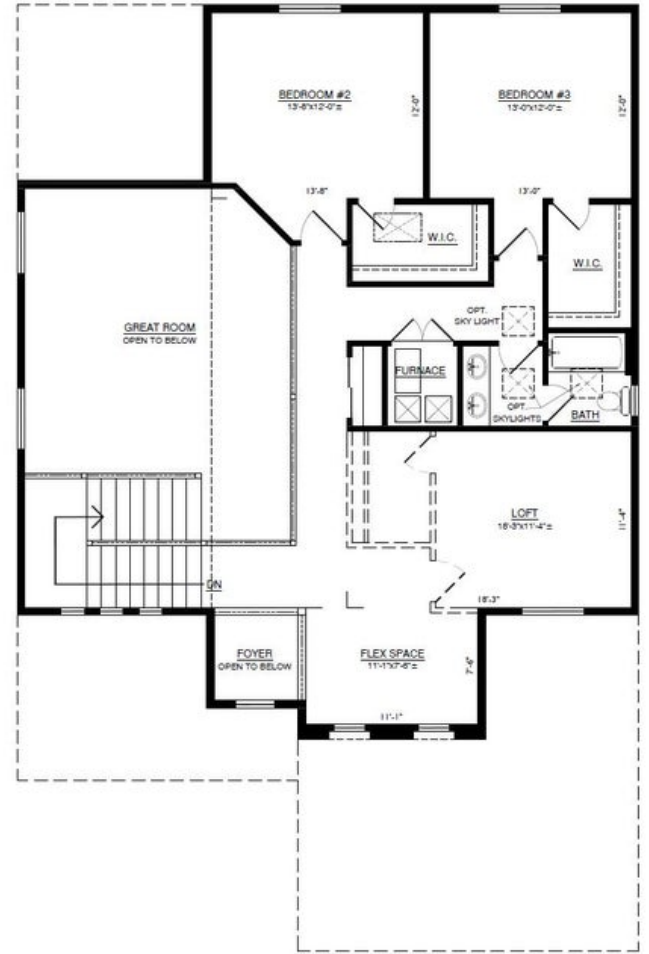
Taylor II

Mil Colores at Fiesta

Taylor II Base



LOWER LEVEL FLOOR PLAN



UPPER LEVEL FLOOR PLAN

Homes may be built in reverse of plans shown, depending on site conditions. Minor architectural changes may be made occasionally at the option of the builder. Printed material is not date stamped. Prices are subject to change. Please reference Abrazo Homes' website for most updated and accurate pricing and information. Please contact your Sales Consultant for details.



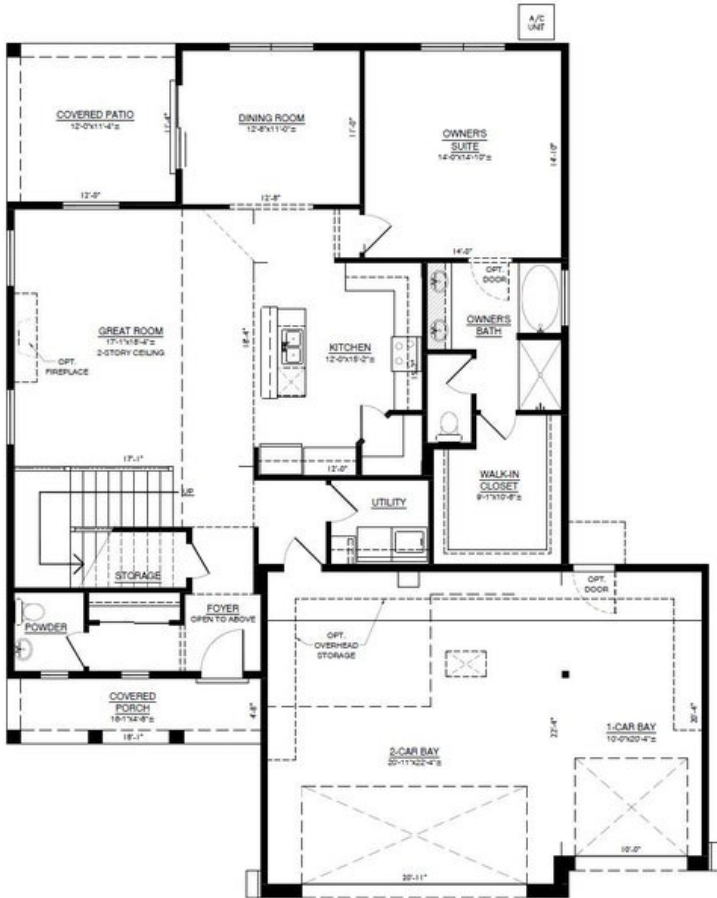


NONE HOME

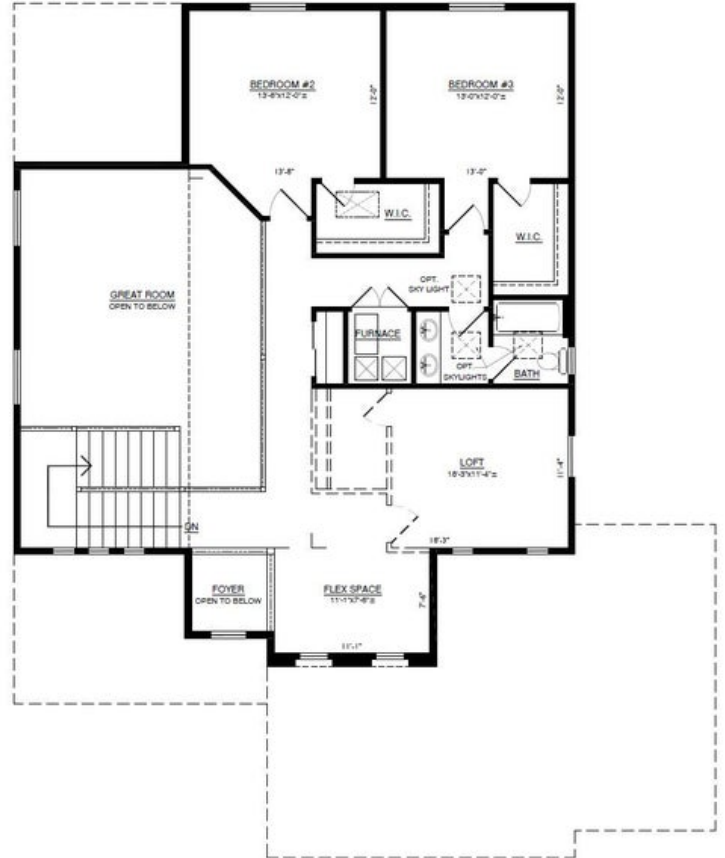
Taylor II

Mil Colores at Fiesta

Taylor II 3 Car Garage



LOWER LEVEL FLOOR PLAN W/OPT. 3-CAR GARAGE



UPPER LEVEL FLOOR PLAN

Homes may be built in reverse of plans shown, depending on site conditions. Minor architectural changes may be made occasionally at the option of the builder. Printed material is not date stamped. Prices are subject to change. Please reference Abrazo Homes' website for most updated and accurate pricing and information. Please contact your Sales Consultant for details.



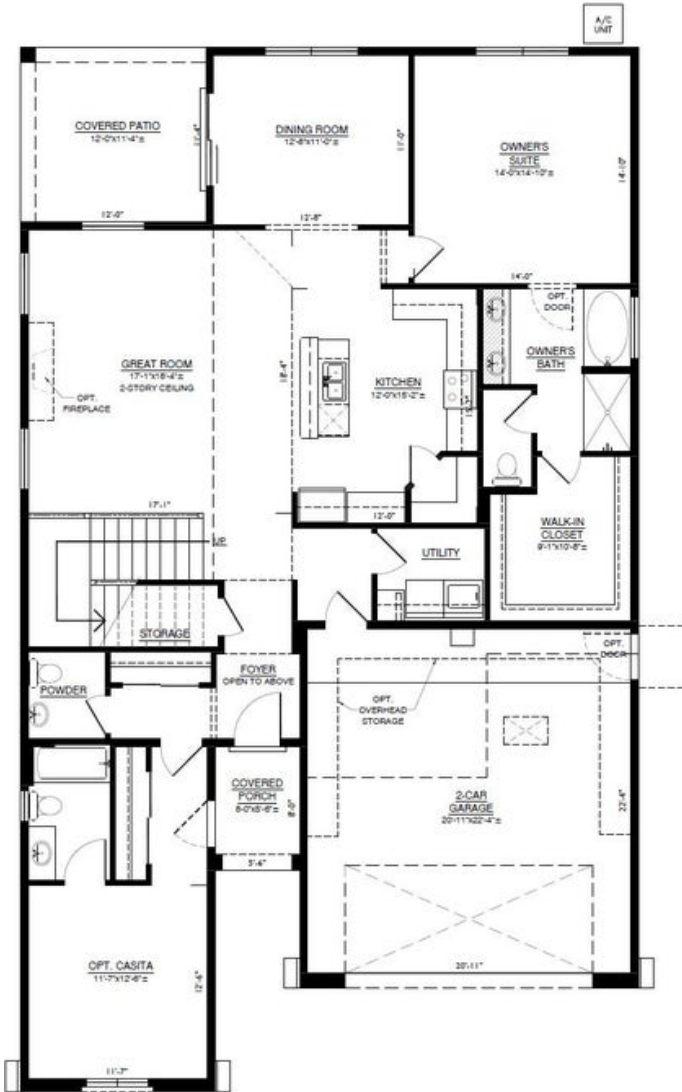


NONE HOME

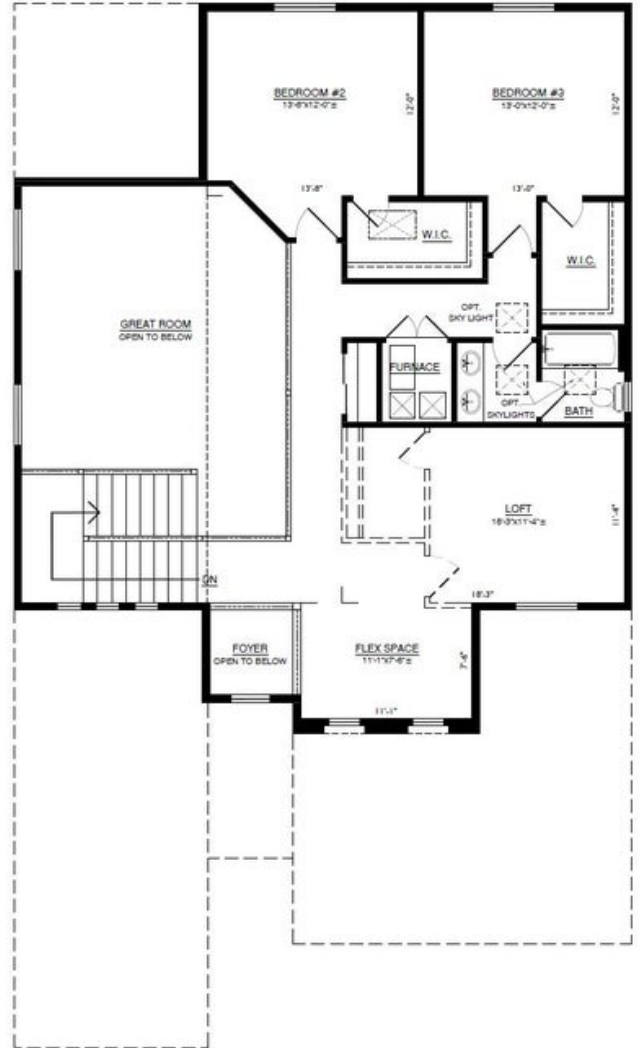
Taylor II

Mil Colores at Fiesta

Taylor II Casita



LOWER LEVEL FLOOR PLAN W/OPT. CASITA



UPPER LEVEL FLOOR PLAN

Homes may be built in reverse of plans shown, depending on site conditions. Minor architectural changes may be made occasionally at the option of the builder. Printed material is not date stamped. Prices are subject to change. Please reference Abrazo Homes' website for most updated and accurate pricing and information. Please contact your Sales Consultant for details.

