



SINGLE FAMILY HOME

Maya

Available in 3 Communities



Call for Price

7 Elevations Available

1,566+ Sq. Ft.

3 Bedrooms

2 Bathrooms

2 Car Garage

Introducing the "Maya" floor plan. This ready-to-be-built home showcases a distinctive elevation, featuring an entertainer's kitchen with a bar top seamlessly connecting to the spacious great room. The primary suite boasts a generous walk-in closet, while optional vaulted ceilings in the great room create a sense of openness. Discover the charm that earned the "Maya" floor plan the prestigious 'Buyer's Choice Award' in the Parade of Homes. In honor of Maya Angelou, this home is designed to inspire and uplift.



Maya - Mission - TileRoof



Maya - Craftsman - TileRoof



Maya - Craftsman - 3rd Car - TileRoof



Maya - Mission - ShingleRoof



Maya - Craftsman w/Out Stone - ShingleRoof



Maya - Craftsman - ShingleRoof



Homes may be built in reverse of plans shown, depending on site conditions. Minor architectural changes may be made occasionally at the option of the builder. Printed material is not date stamped. Prices are subject to change. Please reference Abrazo Homes' website for most updated and accurate pricing and information. Please contact your sales consultant for details.



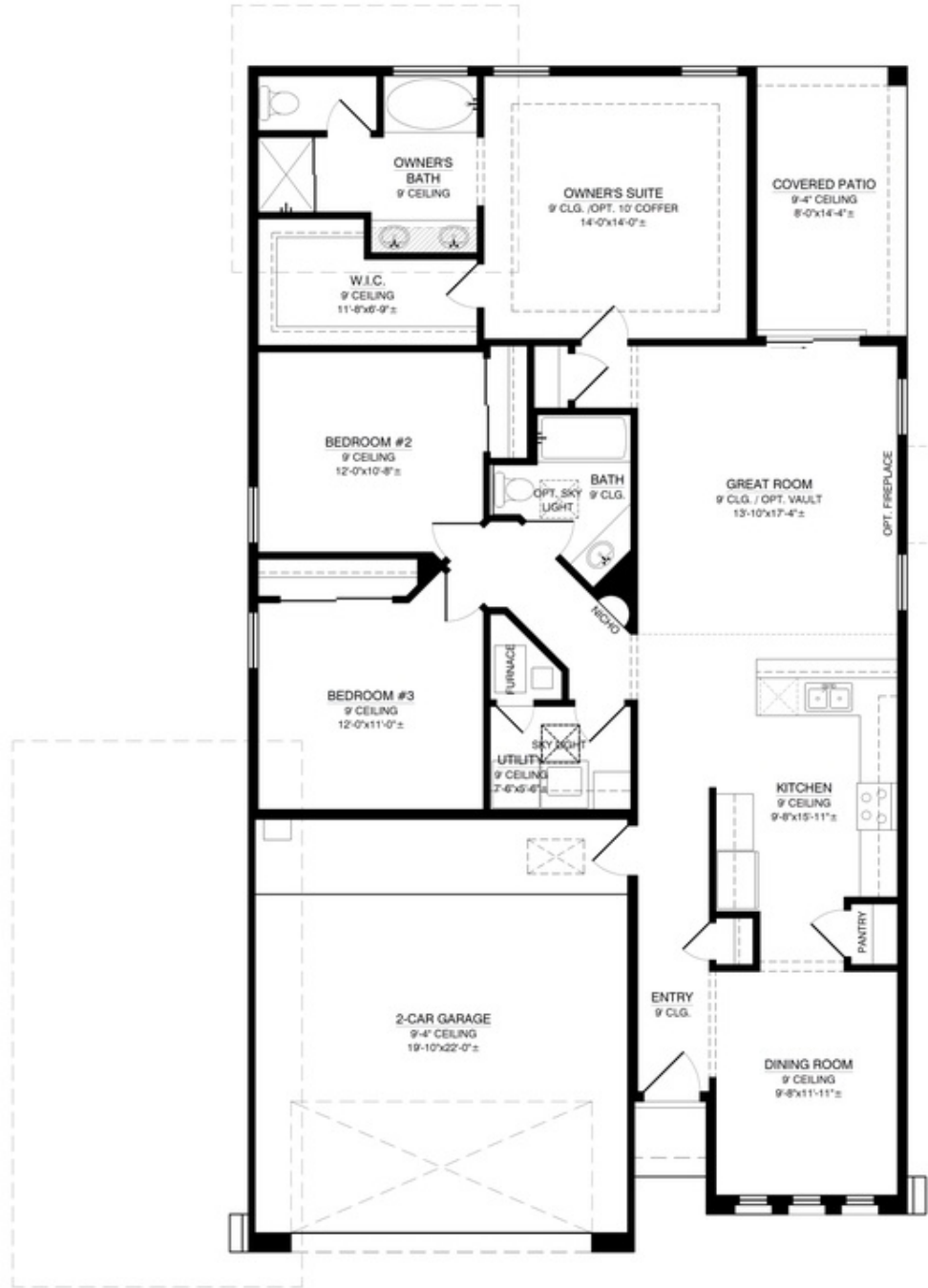


SINGLE FAMILY HOME

Maya

Available in 3 Communities

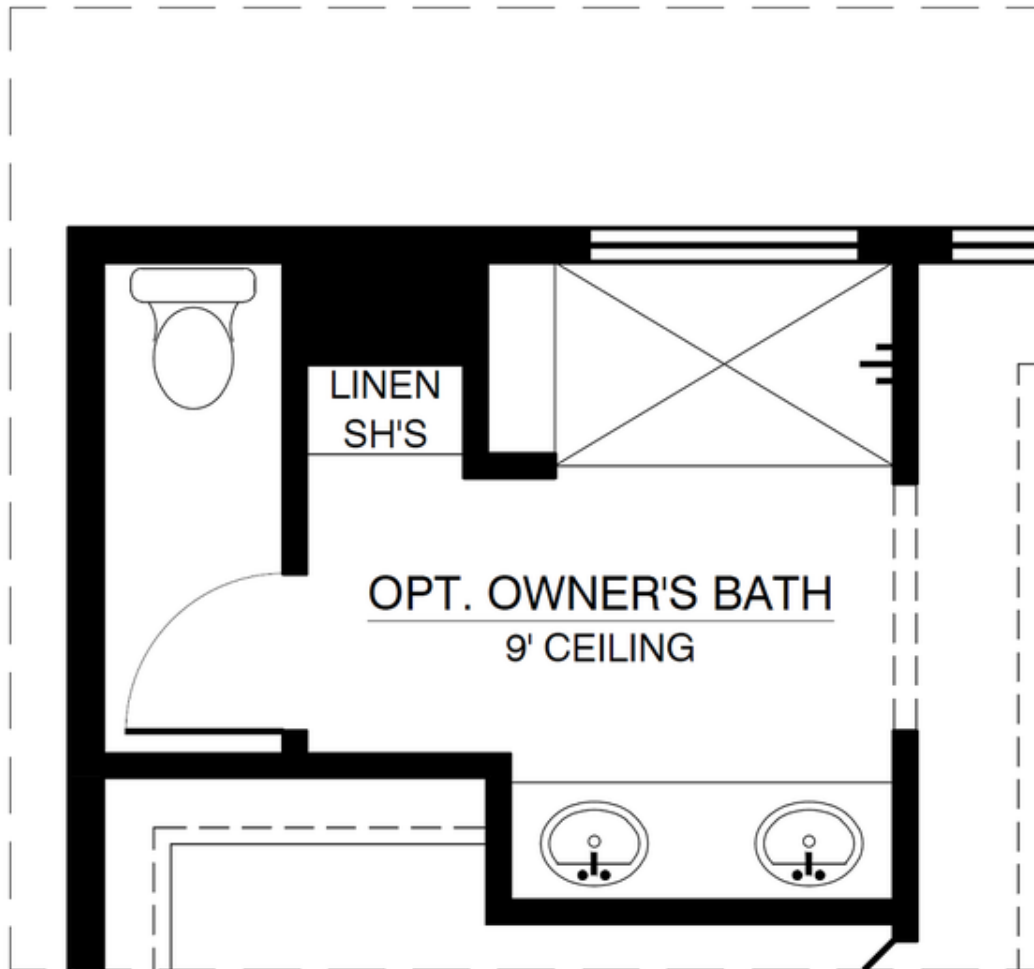
The Maya Floor Plan



Homes may be built in reverse of plans shown, depending on site conditions. Minor architectural changes may be made occasionally at the option of the builder. Printed material is not date stamped. Prices are subject to change. Please reference Abrazo Homes' website for most updated and accurate pricing and information. Please contact your Sales Consultant for details.



Optional Owners Bath



OPT. OWNER'S BATH NO CHANGE IN SQUARE FOOTAGE